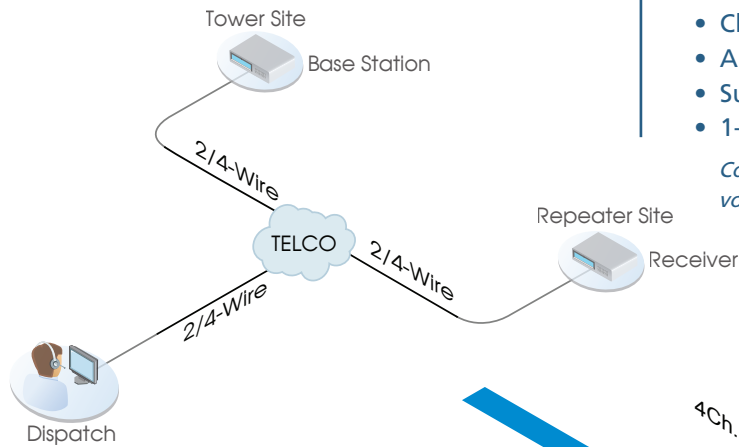


Leased Line Replacement

For Industrial, Multi-Service and Legacy Networks

Utilize Your Existing IP Network

- Microwave (Ethernet, T1/T3, OC3)
- Ethernet LAN/WAN (Fiber, Copper)
- MPLS
- WiMAX
- SONET/SDH



TC3846-6

4-Wire/2-Wire 600Ω Analog and Dry Contact over IP Gateway



Shown in Standalone Chassis

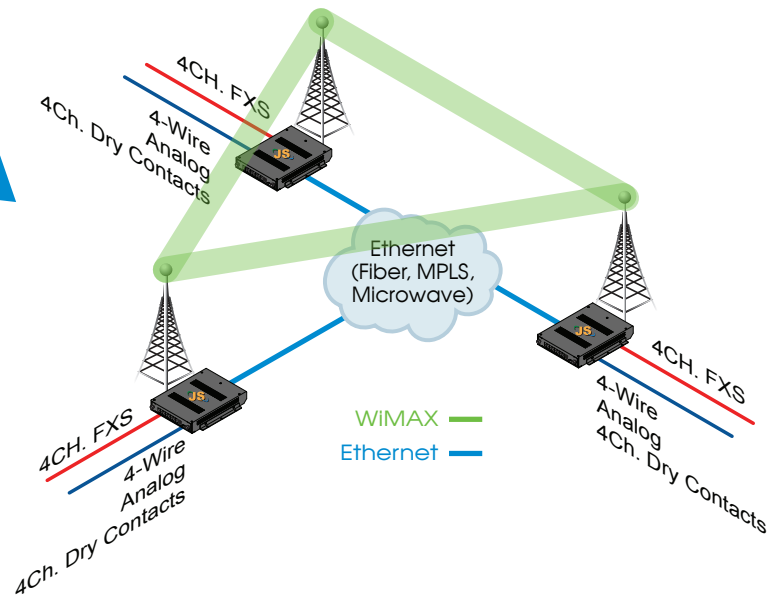
- Eliminate recurring monthly fees
- Clear channel over fiber/Ethernet with no interference
- Analog direct to IP - Uncompressed DS0 (64Kbps)
- Supports Guard / Pilot tone (PTT, COR) operation
- 1-4 Scalable Channels of Analog and E&M over IP

Compatible with Raytheon/JPS SNV-12 voter and other voter/comparators models



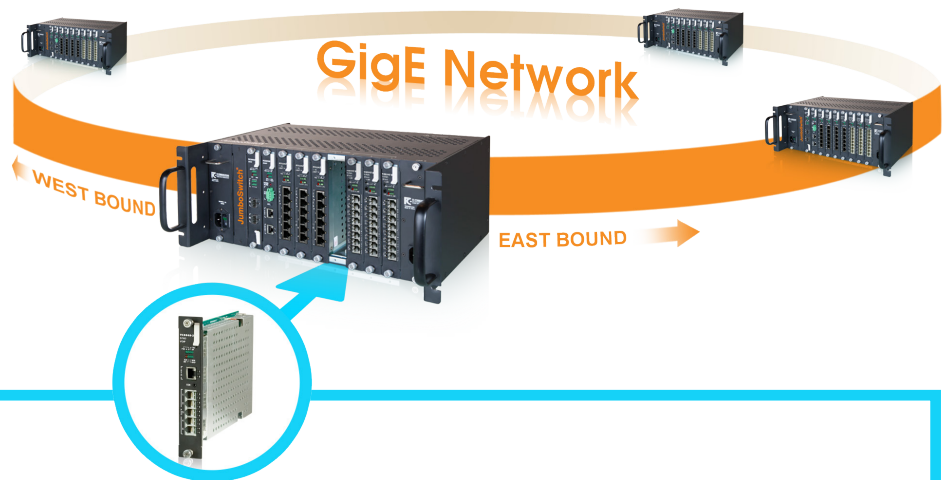
Standalone Chassis Rear

- Redundant Power - (12VDC, 24VDC, -48VDC)
- Dry Contact Alarm Relay
- Alarm Cut-off
- 10/100 Ethernet Port
- Power A & B Fuses
- No fans - Built-in heat sink



For More Information:
www.JumboSwitch.com

JumboSwitch® Interface Cards by Industry



Leased Line Replacement

Description	Part #
4 Ch. 600Ω Analog & 4 Ch. Dry Contact over IP/Ethernet	TC3846-6
4 Ch. T1/E1 over IP/Ethernet	TC3845-1
1 Ch. T3/E3-over-IP/Ethernet	TC3845-3

Public Safety

4 Ch. 600Ω Analog & 4 Ch. Dry Contact over IP/Ethernet	TC3846-6
4 Ch. FXS & 1 Ch. FXO with Virtual PBX	TC3848-1
8 ports Digital I/O over IP/Ethernet	TC3847-5

Power T&D

Teleprotection with 1.5msec Low Latency

2 Ch. G.703/64K Co-Directional over IP/Ethernet	TC3846-1
2 Ch. C37.94, over IP/Ethernet	TC3846-2
4 Ch. 600Ω Analog & 4 Ch. Dry Contact over IP/Ethernet	TC3846-6
4 Ch. Turbo Serial RS-232/RS-422/RS-485 over IP/Ethernet for Low Latency Teleprotection	TC3847-3

Railway Control & Signaling

6x 10/100/1000Base-T, RJ45F	TC3841
6x 1000Base-SX/LX Ports, SFP	TC3842-1
4 Ch. RS-232/RS-422/RS-485 Async over IP/Ethernet Serial Server	TC3847-1
8 ports Digital I/O over IP/Ethernet	TC3847-5
8 Ch. Alarm Relay Monitoring/Control, Digital I/O Managed by TCView®	TC3847-6
2 Ch. RS-422 Sync or Async with Handshaking over IP/Ethernet Turbo	TC3847-7
4 Ch. FXS & 1 Ch. FXO with Virtual PBX	TC3848-1

Serial Data-over-IP

Description	Part #
4 Ch. RS-232/RS-422/RS-485 Async over IP/Ethernet Serial Server	TC3847-1
4 Ch. Turbo Serial RS-232/RS-422/RS-485 over IP/Ethernet for Low Latency Teleprotection	TC3847-3
8 Ch. Dry Contact-over-IP Gateway	TC3847-5
2 CH. RS-422 Sync or Async with handshaking over IP/Ethernet Turbo	TC3847-7

SONET/SDH Interfaces

Ethernet over T1/E1	TC3844-1
Ethernet over T3/E3	TC3844-3
Ethernet over OC3 (STM-1)	TC3844-5

Phone/Fax/Data Modem over IP/Ethernet

4 Ch. FXS & 1 Ch. FXO with Virtual PBX	TC3848-1
5 Ch. FXO with Virtual PBX	TC3848-2
4 Ch. FXS for Phone/Modem/Fax over IP/Ethernet	TC3848-3
4 ports of FXO for Phone/Modem/Fax over IP/Ethernet	TC3848-4

General Ethernet

6x 10/100/1000 Ethernet Ports, RJ45F	TC3841
6x 10/100Base-T, RJ45F	TC3841-2
6x 1000Base-SX/LX Ports, SFP	TC3842-1
3x 1000Base-SX/LX SFP Ports, 3x 100Base FX SFP Ports	TC3842-2
6 ports of 100Base FX SFP	TC3842-3

Oil & Gas

4 Ch. 600Ω Analog & 4 Ch. Dry Contact over IP/Ethernet	TC3846-6
4 Ch. RS-232/RS-422/RS-485 Async over IP/Ethernet Serial Server	TC3847-1
8 ports Digital I/O over IP/Ethernet	TC3847-5
8 Ch. Alarm Relay Monitoring/Control over IP/Ethernet, Digital I/O Managed by TCView®	TC3847-6
4 Ch. RS-232/RS-422/RS-485 Async over IP/Ethernet Serial Server	TC3848-1/2